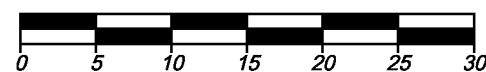


PLAN OF SUBDIVISION OF PART OF LOT 2,
SECTION 42, LAKE DISTRICT, PLAN VIP77795,
EXCEPT PART IN PLANS VIP79777 AND VIP81610

B.C.G.S. MAP SHEET 92B.054



All distances and elevations are in metres and
decimals thereof, unless otherwise noted.

The intended plot size of this plan is 560mm
in width by 432mm in height (C Size)
when plotted at a scale of 1:500

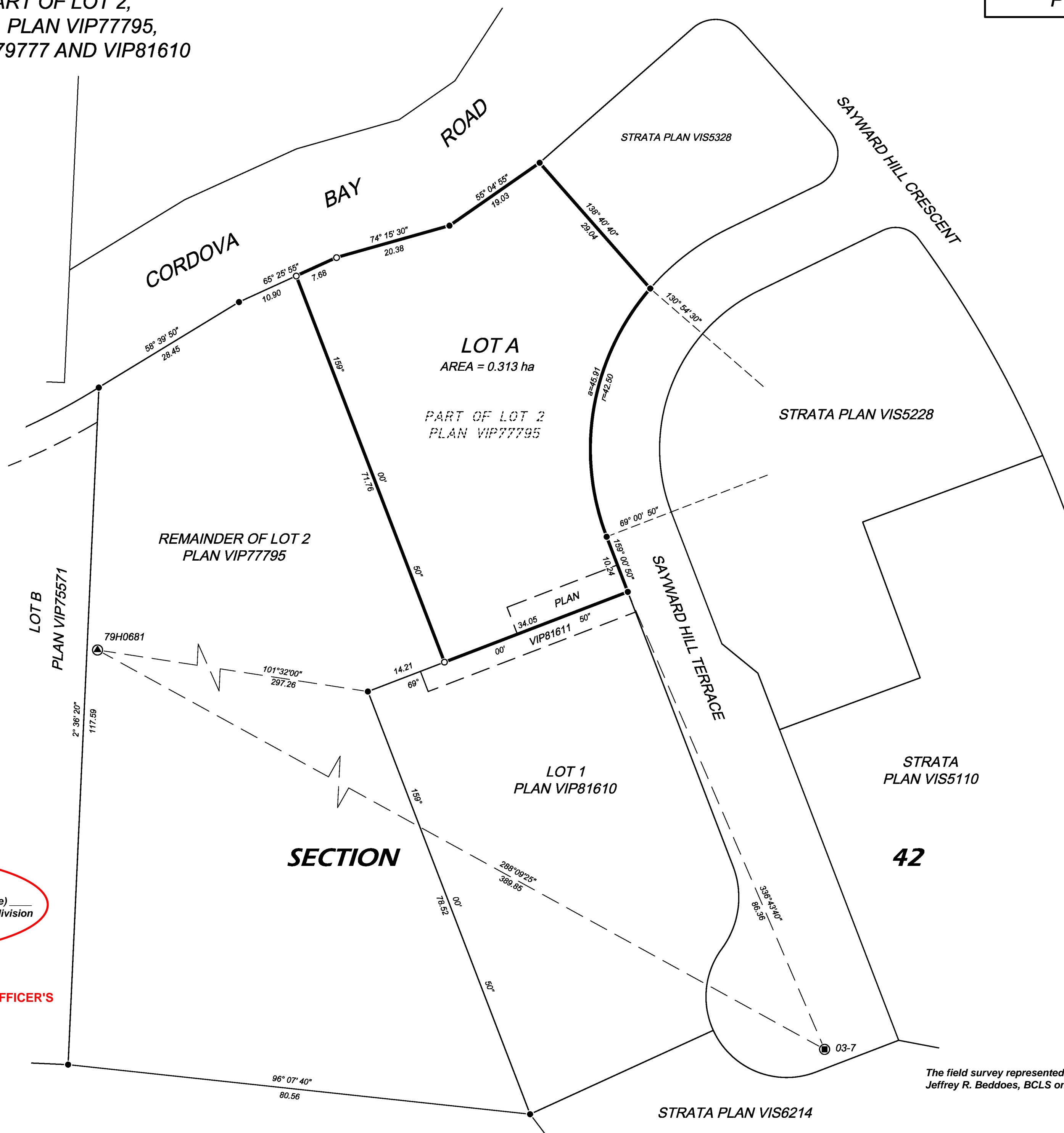
LEGEND

NAD83(CSRS) grid bearings are derived from GPS
observations between Control Monuments 03-7 and
79H0681 as shown on Plan VIP81610.

Integrated Survey Area No. 30, the Corporation of
the District of Saanich

- ⊙ denotes control monument found.
- ⦿ denotes modified rock post (Type 2).
- denotes standard iron post found (Type 5).
- denotes standard iron post set (Type 5).
- a denotes arc length
- r denotes radius
- ha denotes hectares

This plan shows ground level measured distances.
Prior to computation of U.T.M. co-ordinates multiply
by combined factor 0.9996008.



AS APPROPRIATE

A Covenant in the name of ___ (type holder of covenant here) ___
pursuant to Section 219 is a condition of approval for subdivision

This plan lies within the jurisdiction of the Approving
Officer for the Capital Regional District

TRAN File: 1234567

APPROVING OFFICER'S
FILE #

This plan lies within the Capital Regional District

Polaris Land Surveying Inc.
Box 324, #110-174 Wilson Street
Victoria BC V9A 7N7

File: 0010/SAYWARD-PLS1040
Drawing: 0010-SAYWARD-PLS1040-SUB-DSP.DWG
Date: 2007-05-08

The field survey represented by this plan was completed by
Jeffrey R. Beddoes, BCLS on the 13th day of November, 2007