

REFERENCE PLAN OF EASEMENT OVER PART OF LOT 1,
SECTIONS 36 AND 37, SAMPLE DISTRICT, PLAN VIP11111.

Pursuant to Section 99(1)(e) of the Land Title Act.
BCGS MAP SHEET 92X.000

PLAN EPP111111



All distances are in metres and decimals thereof, unless otherwise noted.

The intended plot size of this plan is 864mm in width by 560mm in height (D Size) when plotted at a scale of 1:1500.

LEGEND

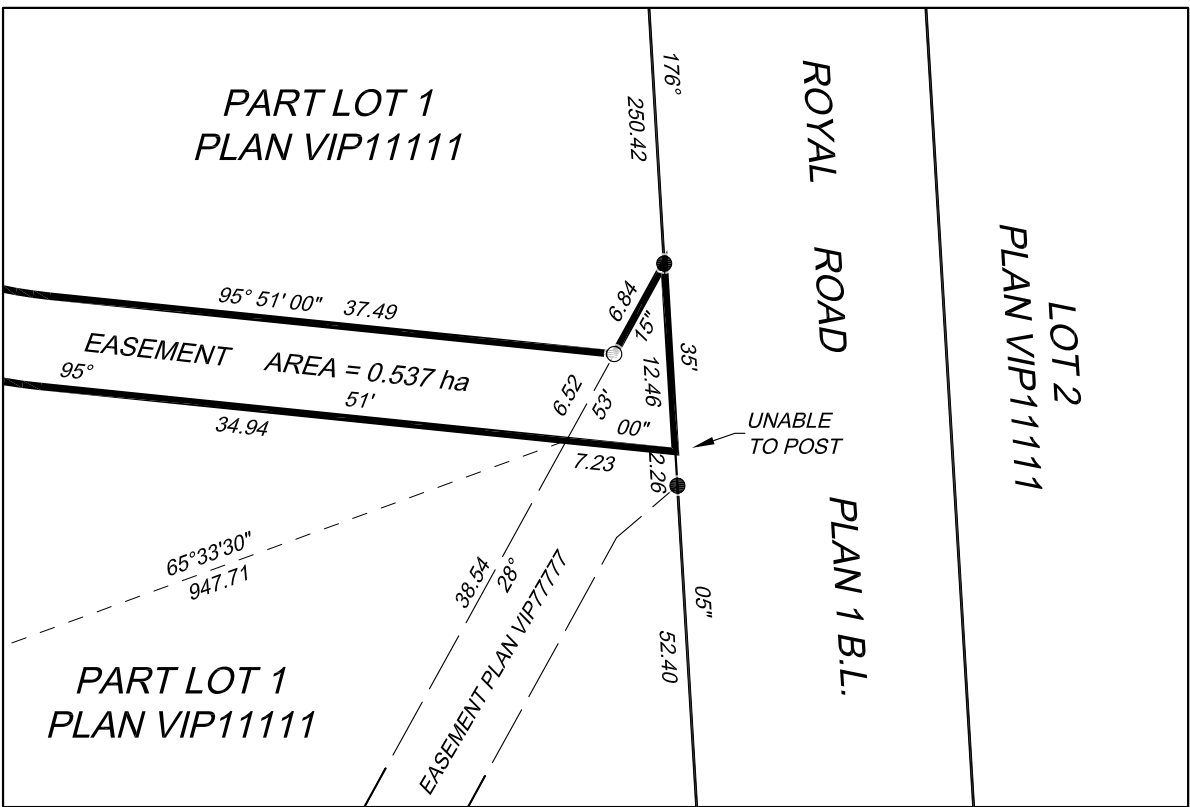
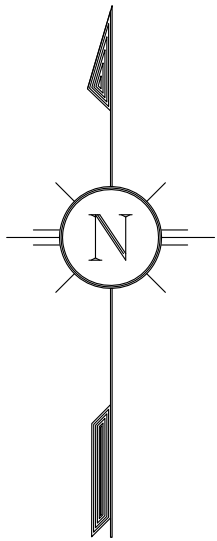
- denotes control monument found
- denotes standard iron post found
- denotes standard iron post set
- m2 denotes square metres
- DL denotes district lot

Integrated Survey Area No. 30, The Corporation of the District of _____, NAD83 (CSRS).

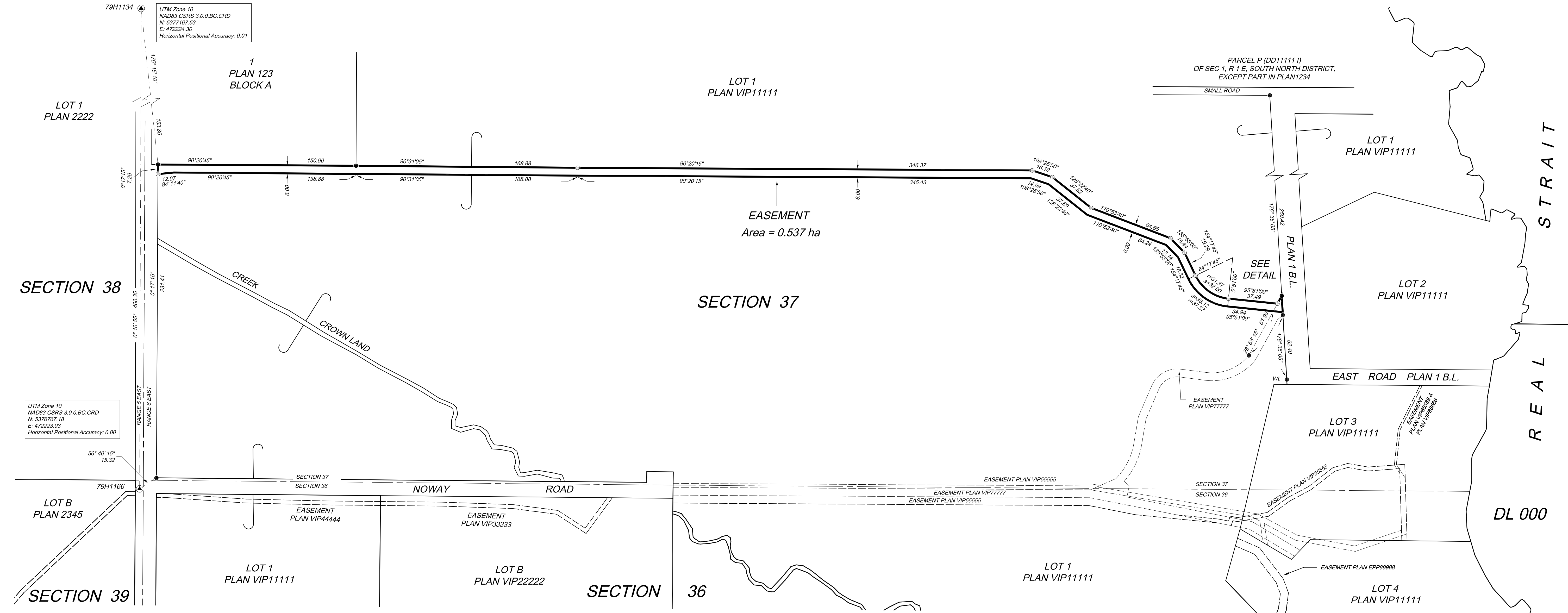
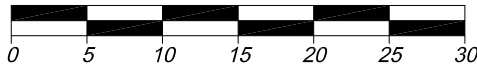
Grid bearings are derived from dual frequency GNSS observations to ISA monuments 79H1134 and 79H1166.

This plan shows horizontal ground-level distances unless otherwise specified. To compute grid distances, multiply ground-level distances by the average combined factor of 0.999609 which has been derived from ISA monument 79H1166.

Note: This plan shows one or more witness posts which are not set on the true corner.



DETAIL
Scale of enlargement is 1:500 at intended plot size of plan



Sample Land Surveying Inc.

Address _____ BC XXX XXX

File: Sample Drawings
Drawing: Sample 2A.DWG
Date: 2014-10-01

This plan lies within the Capital Regional District.

The field survey represented by this plan was completed on the 31st day of February, 2014.

Joe Surveyor, BCLS 000