



OUR FILE

87-04-08

CIRCULAR LETTER TO ALL BRITISH COLUMBIA LAND SURVEYORS

Re: Branch Name Change

Restructuring within the Ministry of Forests and Lands has resulted in the Surveys and Lands Branch being renamed SURVEYOR GENERAL BRANCH.

E.D.M. Standardization Base - Langley

Re: Calibration of Base

The base is located along the north edge of the blacktop of 68th Ave., between 229th and 232nd Street in Langley. It is marked by three iron pins marked A, B and C and referenced with a drill hole in each. IP "A" has two drill holes; the larger of the two was used.

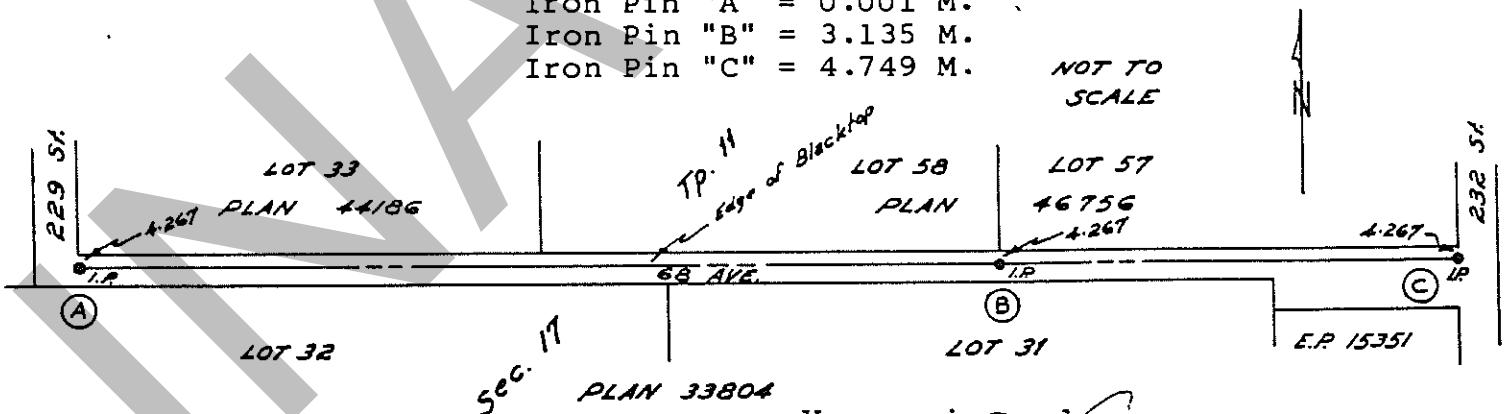
HORIZONTAL DISTANCES

A-B 397.133 Metres
B-C 177.278 Metres
A-C 574.411 Metres

ASSUMED ELEVATIONS

Iron Pin "A" = 0.001 M.
Iron Pin "B" = 3.135 M.
Iron Pin "C" = 4.749 M.

NOT TO
SCALE



Yours sincerely,

[Signature]
D. A. DUFFY
Surveyor General
and Director