

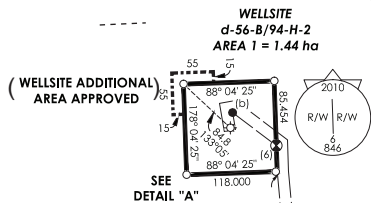
Unsurveyed 66

65

64

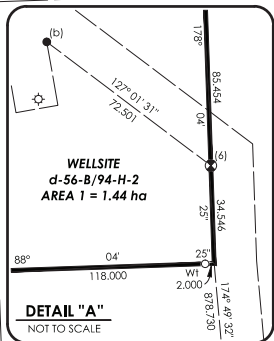
P&NG BLOCK B

GROUP 94-H-2



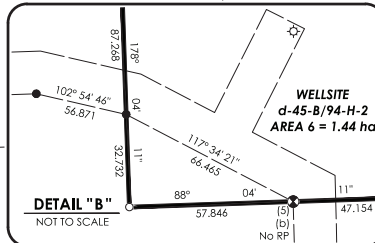
(WELLSITE ADDITIONAL AREA APPROVED)

SEE DETAIL "A"

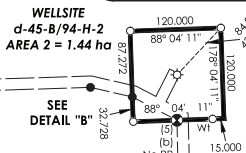


DETAIL "A"
NOT TO SCALE

Crown



DETAIL "B"
NOT TO SCALE



SEE DETAIL "B"

CP (4)
UTM Northing 4324138.7
UTM Easting 640142.5
Datum NAD 83(CSRS), UTM Zone 10
Estimated network horizontal accuracy is 0.4 m
Combined Factor 0.999725
To convert grid bearings to bearings referred to the astronomic meridian through CP (4) add 1° 56' 16".

46

WellSite
d-46-B/94-H-2
R/W Plan 25743

R/W Plan 25743

45

44

Land

PLAN EPP10393

LEGEND

FOUND	PLACED	
●	○	Standard Capped Post
○	○	Standard Iron Post
○	○	Well Head
○	○	Abandoned Well
○	(b)	Buried

NOTES

Reference posts at all survey posts unless otherwise noted.
All distances are in metres and decimals thereof unless otherwise noted.
Grid bearings are referred to the central meridian of UTM Zone 10 (123rd meridian of West Longitude) and are derived from GPS observations. This plan shows horizontal ground-level distances based on a mean ellipsoidal elevation of 737 m. To compute grid distances, multiply ground-level distances by the mean combined factor of 0.999724.
The UTM co-ordinates and estimated network horizontal accuracy are derived from GPS dual frequency baseline ties to Fort St. John ACP (GCM#981274).
This plan shows one or more witness posts which are set along the production of the boundary line unless otherwise noted.

BOOK OF REFERENCE

LOCATION	OGC No.	CLIENT FILE	DESCRIPTION	AREA
Unsurveyed Crown Land	9634116		WELLSITE d-56-B, 94-H-2	AREA 1 = 1.44 ha
Unsurveyed Crown Land	9633650		WELLSITE d-45-B, 94-H-2	AREA 2 = 1.44 ha
TOTAL				2.88 ha

This plan is prepared as the Official Plan of the Lands shown hereon for the Surveyor General.

DECLARATION

The field survey represented by this plan was completed by Chris R. Sakundiak, BCLS on the 5th day of November, 2010.

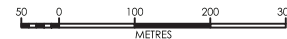
--THIS PLAN LIES WITHIN THE PEACE RIVER REGIONAL DISTRICT--

PENGROWTH CORPORATION

**PLAN OF STATUTORY
RIGHT OF WAY
IN
UNSURVEYED CROWN LAND
PEACE RIVER DISTRICT**

PURSUANT TO SEC. 113 OF THE LAND TITLE ACT

BCGS 94H.007



The intended plot size of this plan is 560mm in width by 432mm in height when plotted at a scale of 1:5000 (use C size sheet)

can-am geomatics
can-am geomatics bc Phone: 250.787.7171
Fort St. John, B.C. Toll Free: 1.866.208.0983
www.canam.com Fax: 250.787.2323

CAN-AM FILE: J20100412	
CAD FILE: J20100412RWA0	
LTO ID: 010912	CLIENT FILE:
DATE: 11/04/21	Drawn by: PJP